

How-To: Electrical Construction

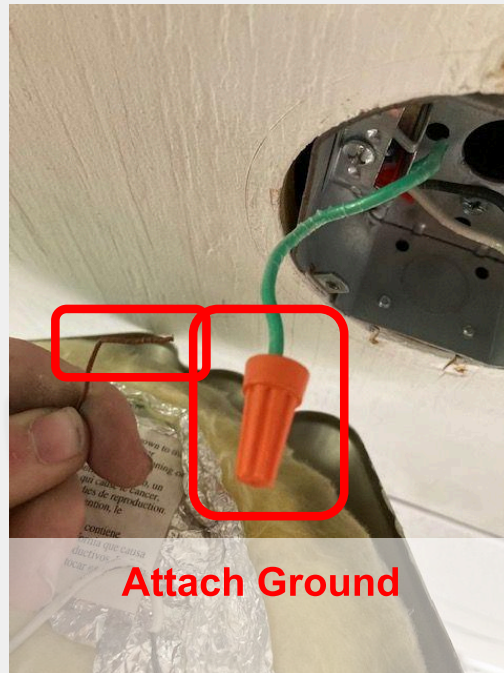
# Hanging Flush Ceiling Luminaire

By: EVG Electric

**NOTICE:** At no one time should a person be working on a live electrical circuit, make sure to shut down and lock out all incoming sources of power to the circuit. It is recommended to have a qualified electrician complete electrical work. Working with electrical work can have serious consequences such as fires, deafness, blindness, severe burns, and even death. Proceed with extreme caution.

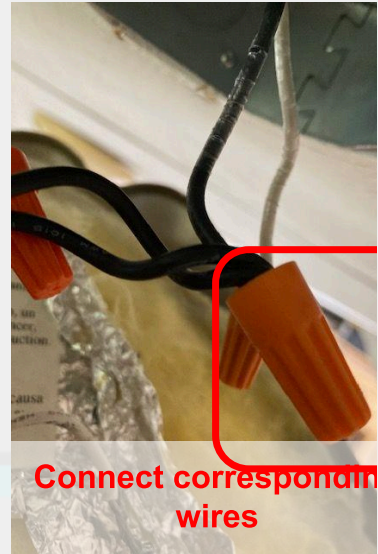
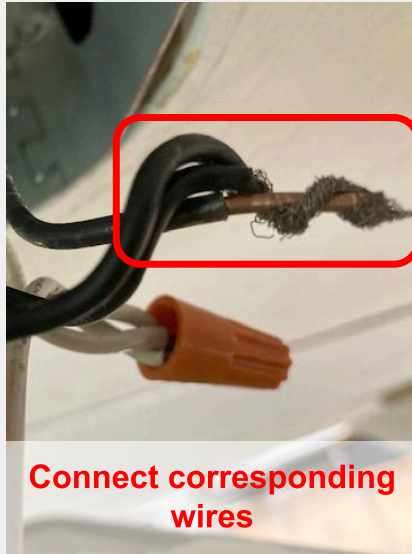
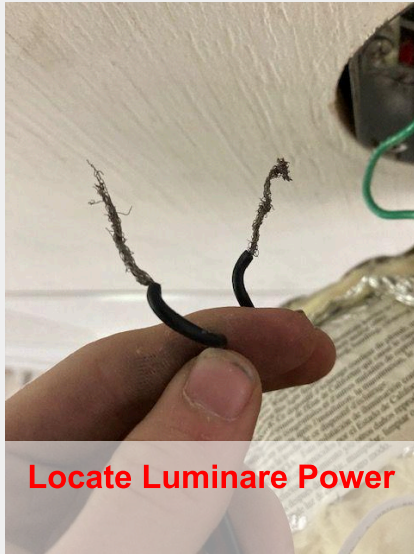
## Step 1 - Attaching Ground

Attach all ground and emergency connections to the junction box & corresponding wires.



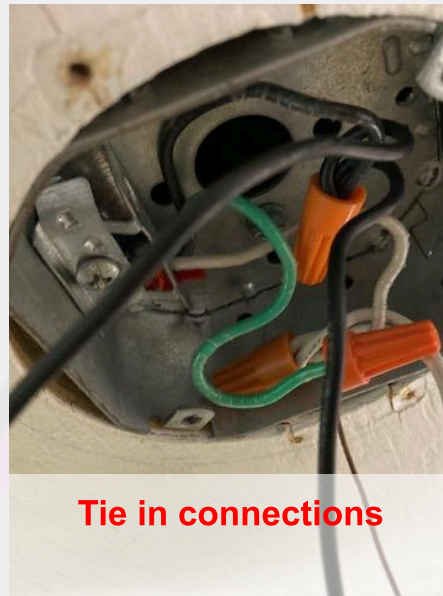
## Step 2 - Attaching Hot

Attach all hot connections to corresponding wires. Attach all luminaries to the proper cables.



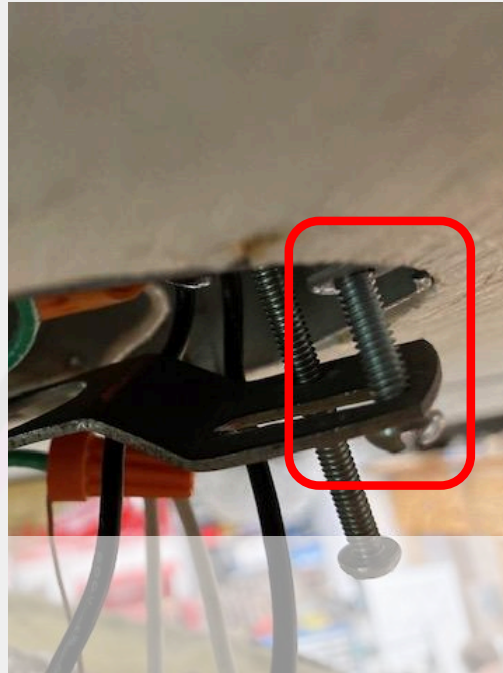
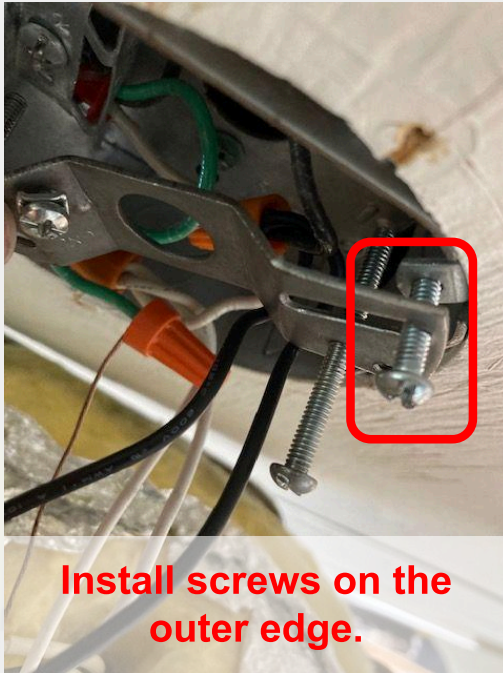
## Step 3 - Attaching Neutral

Attach all neutral connections to corresponding wires. Attach all luminaires to the proper cables.



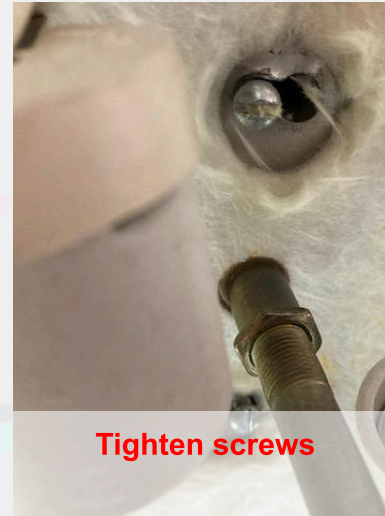
## Step 4 - Mounting Bracket

Attach the mounting bracket to the box. Remove the screws of the J-box, drive the screws through the holes in the bracket, and tighten them.



## Step 5 - Hanging Light

On the top plate of the lighting plate, two holes can slide into place. Loosen the longer screws from the bracket, slide on the top plate, and tighten the screws.





## Step 6 Installing Light Bulbs

Install the light bulbs.



## Step 7 Hanging Globe, Overview

Install the glass globe. Slide the globe onto the main plate by passing the threaded rod through the center hole of the globe, adding the decorative washer plate, and adding the decorative cap nut.



**Slide globe into place**



**Attach decorative  
washer plate**



**Attach cap nut**



## Step 8 - Last Touches, Overview

Attach any other features, decorative items, etc.



**NOTICE:** At no one time should a person be working on a live electrical circuit, make sure to shut down and lock out all incoming sources of power to the circuit. It is recommended to have a qualified electrician complete electrical work. Working with electrical work can have serious consequences such as fires, deafness, blindness, severe burns, and even death. Proceed with extreme caution.