

How-To: Electrical Construction

# Hanging Pendant Fixture Installation

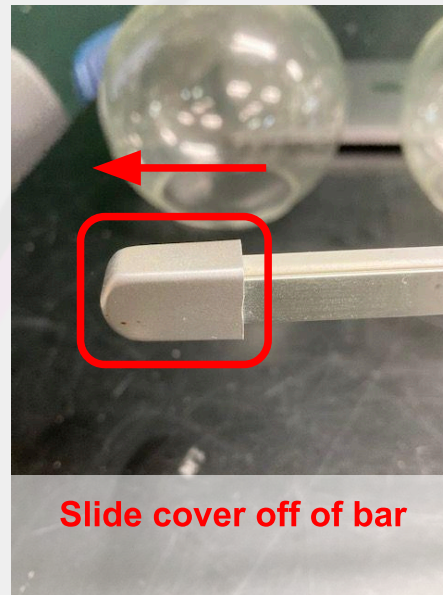
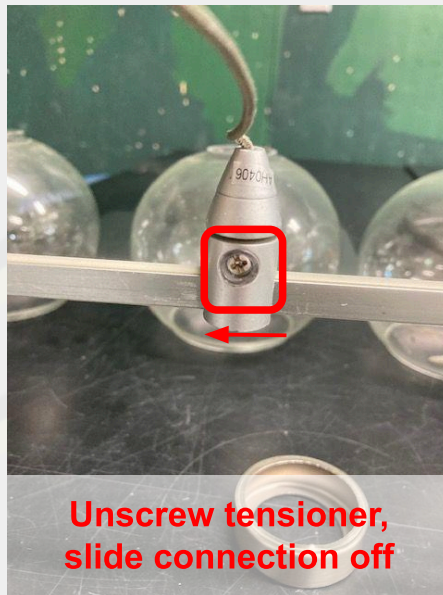
By: EVG Electric

**NOTICE:** At no one time should a person be working on a live electrical circuit, make sure to shut down and lock out all incoming sources of power to the circuit. It is recommended to have a qualified electrician complete electrical work. Working with electrical work can have serious consequences such as fires, deafness, blindness, severe burns, and even death. Proceed with extreme caution.

## Step 1 - Prepare

Remove all breakable parts from your fixture before installing, this includes but is not limited to light bulbs, glass shades, decorative items, hanging wires & cables.

In this pendent-track fixture, we have removal track pendants. Unscrew the tensioners and slide the pendant connections off of the initial bar to remove the pendants. This fixture also includes end stoppers, remove these stoppers to slide off any devices on the connection bar.



## Step 2 - Prepare

Remove the center bar (if applicable) from the center fixture. Remove the j-box base and main fixture from each other.

This pendant-bar fixture features a connectable bar that travels through the center main fixture. Loosen the tensioner screw and slide the center bar out of the connector. This fixture also features a removable base, remove the base from the main fixture to access connectors.



## Step 3 - Securement

Bond all ground cables to the j-box (if metal). Feed your wires (Hot, Ground, Neutral) through whatever applicable hole provided within the main center plate. Make sure to use a bushing in this hole in order to not damage the incoming wires. Then properly secure your main fixture base to the j-box and attach any emergency fail cable.

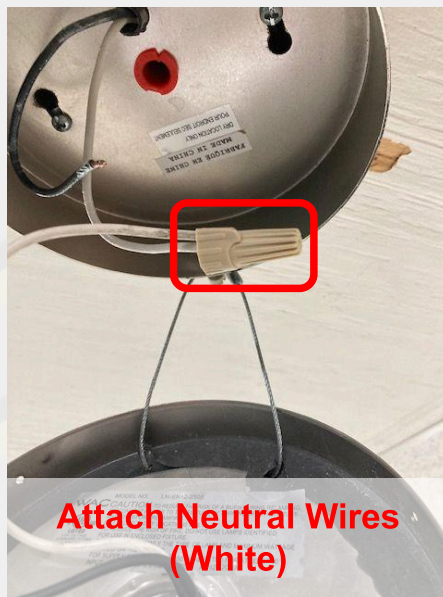
This pendant fixture features two holes, the wires were fed through the black bushing hole. The main base was then attached to the box by loosening the screws, inserting the fixture into the proper slots, and then tightening the screws.



## Step 4 - Wire Connections

Attach all corresponding wires to each other. Connect Hot to Hot (Black); Neutral to Neutral (White), and Ground to Ground (Bare/Green). Use proper wire nuts for proper securement, this includes but is not limited to Orange, Yellow, or Tan wire nuts.

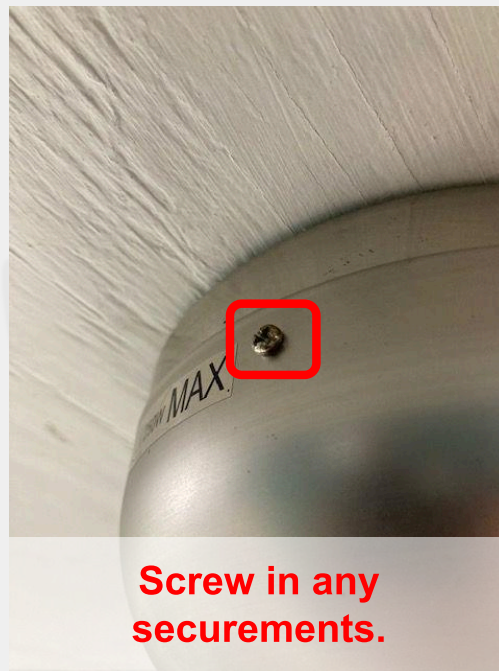
This fixture only has a Hot & a Neutral. Brown wire nuts were used to attach the two different wires to each other.



## Step 5 - Securement

Close up the main fixture box and secure any other emergency support cables.

This fixture has 1 emergency support cable, it was attached to a clip in the box. 3 screws on the outer edge were screwed to hold the transformer box to the main box.

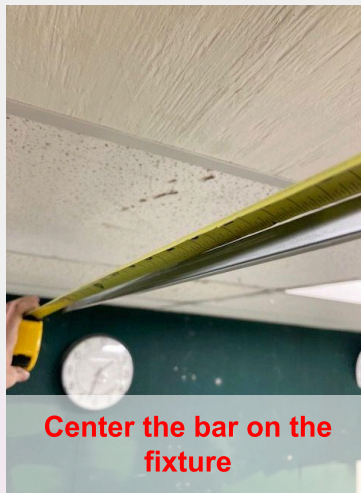
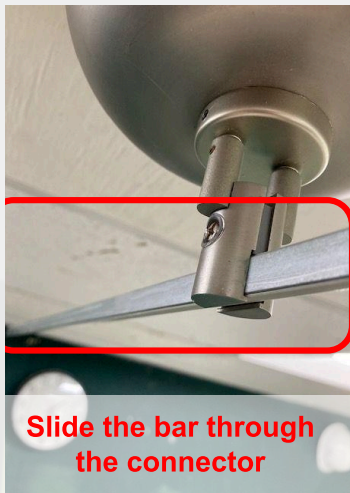




## Step 6 Connection Bar Add-on

Slide in whatever type of attachable bar travels through the main base which allows to connect any other lighting onto.

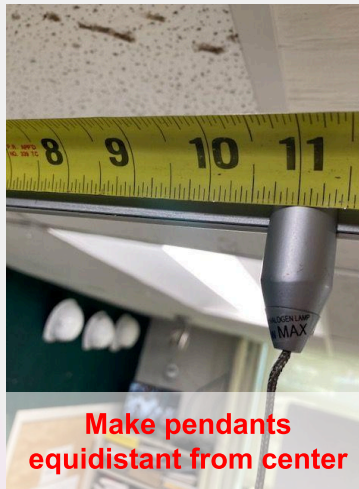
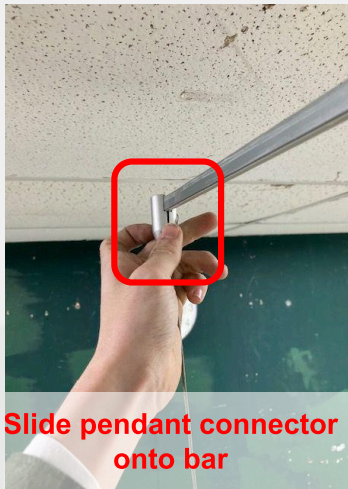
This fixture uses a low-voltage bar that travels through the main base and can have pendants hung from it. Secure the bar to the main base.



## Step 7 Pendant Hanging

Slide the pendant connections onto the bar, center them, and secure them.

This fixture has two pendants that can be hung. Without extra securements, they must equally distant from the center.

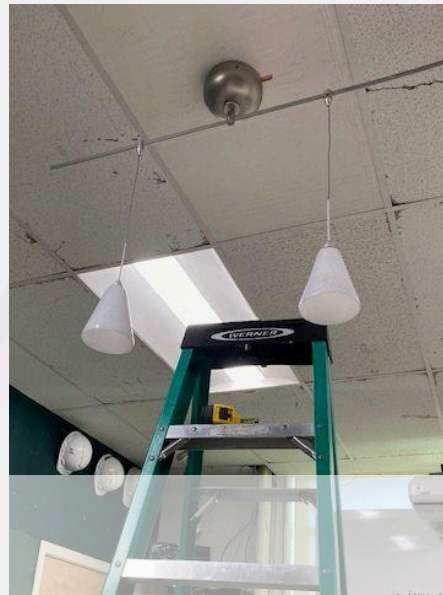




## Step 8 - Last Touches, Overview

Add all last decorative fittings, and attach end caps to prevent damage.

This fixture has attachable bars, since we are not adding bars we will be adding end caps to the end of the low-voltage bar.



**NOTICE:** At no one time should a person be working on a live electrical circuit, make sure to shut down and lock out all incoming sources of power to the circuit. It is recommended to have a qualified electrician complete electrical work. Working with electrical work can have serious consequences such as fires, deafness, blindness, severe burns, and even death. Proceed with extreme caution.