

How-To: Electrical Construction

Mounting a Wall Luminaire

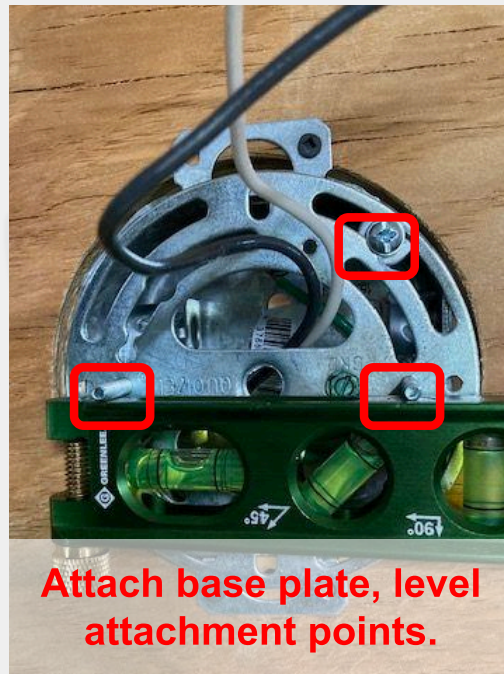
By: EVG Electric

NOTICE: At no one time should a person be working on a live electrical circuit, make sure to shut down and lock out all incoming sources of power to the circuit. It is recommended to have a qualified electrician complete electrical work. Working with electrical work can have serious consequences such as fires, deafness, blindness, severe burns, and even death. Proceed with extreme caution.

Step 1 - Attach Baseplate

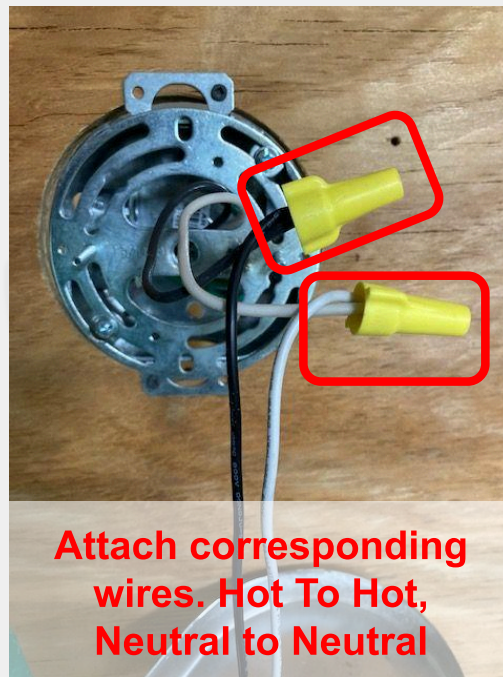
A baseplate is required to mount the wall sconce to the wall. The baseplate attaches to the box and has additional screws that hold the wall plate to the box.

Fasten the wall plate screws to the mounting holes in the bracket & make sure the wall cover screws are level/plumb to make sure the fixture is hung properly.



Step 2 - Wire connections

The wall fixture has typically three connections, Hot, Neutral, and Ground. Attach the connections to their corresponding partners. Hot to hot, Neutral to neutral. You can connect the wires in the junction box and tuck them behind the baseplate or have them secured tightly against the baseplate.



Step 3 - Ground/Emergency Connection

All metal fixtures should have a ground connection, the connection typically is a bare wire, green wire, or green wire with yellow stripes. This may also be the emergency attachment wire in case of failure. Depending on the box you may attach the ground wire directly to the incoming ground cable or may additionally bond the box.

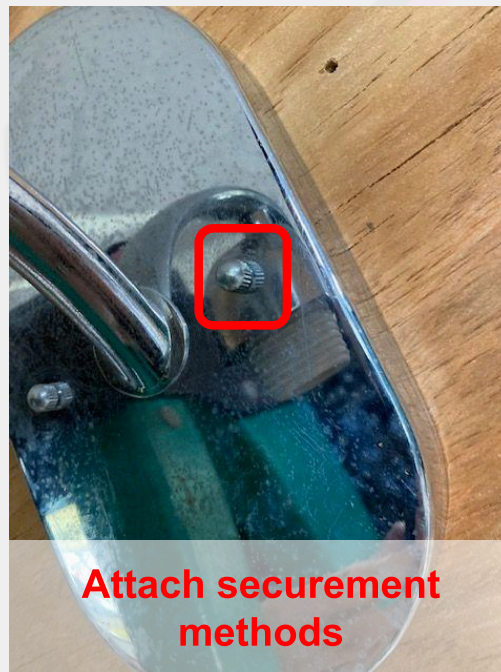
In this example, the metal box is already bonded through the ground wire so now the fixture will also be bonded to the box through the baseplate.



Step 4 - Cover Plate Attachment

The cover plate is the second part of the fixture which typically includes the illuminating and/or any decorative pieces. Securing this part allows for the screws exuding from the baseplate to pass through the corresponding holes, then attach the proper securement to hold the part in place.

In this example the screws align up horizontally with holes in the cover plate, then decorative cap nuts are placed on top.



Step 5 - Glass/Decorational Items

Attach any devices of decorative value or glass shades to the device. This may include ropes, wires, hanging devices, etc. To attach the glass shade to the fixture first slide the shade over the bulb socket, then screw in any device provided to hold the shade in place.



Step 6 Last Touches, Overview

Attach any additional decorative items, screw in light bulbs & secure all last attachments.



NOTICE: At no one time should a person be working on a live electrical circuit, make sure to shut down and lock out all incoming sources of power to the circuit. It is recommended to have a qualified electrician complete electrical work. Working with electrical work can have serious consequences such as fires, deafness, blindness, severe burns, and even death. Proceed with extreme caution.