

How-To: Electrical Construction

Removing A Flush Ceiling Luminaire

By: EVG Electric

NOTICE: At no one time should a person be working on a live electrical circuit, make sure to shut down and lock out all incoming sources of power to the circuit. It is recommended to have a qualified electrician complete electrical work. Working with electrical work can have serious consequences such as fires, deafness, blindness, severe burns, and even death. Proceed with extreme caution.

Step 1 - Globe Removal

Remove all attachments holding the glass globe in place, this includes but is not limited to the cap nut, washer plate, and glass globe.



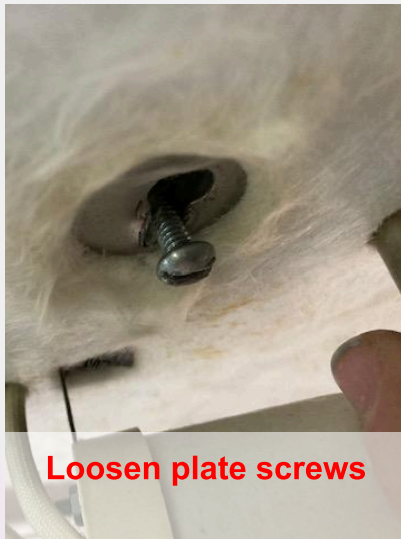
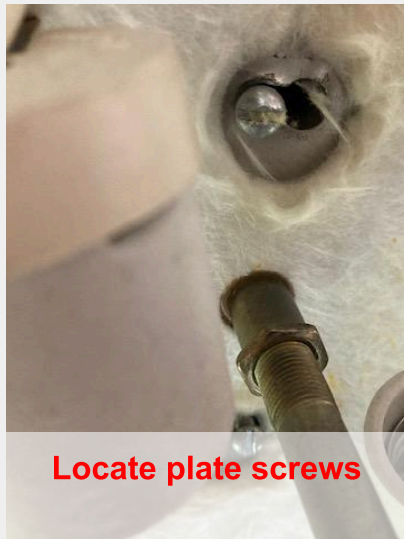
Step 2 - Remove bulbs

Attach all hot connections to corresponding wires. Attach all luminaries to the proper cables.



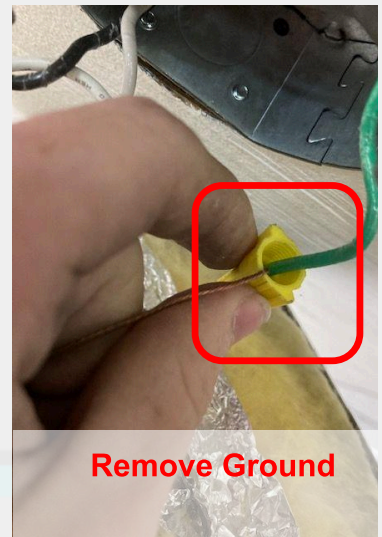
Step 3 - Remove the Top Plate

Remove the top plate; loosen the screws securing the plate to the box bracket and twist the top plate off.



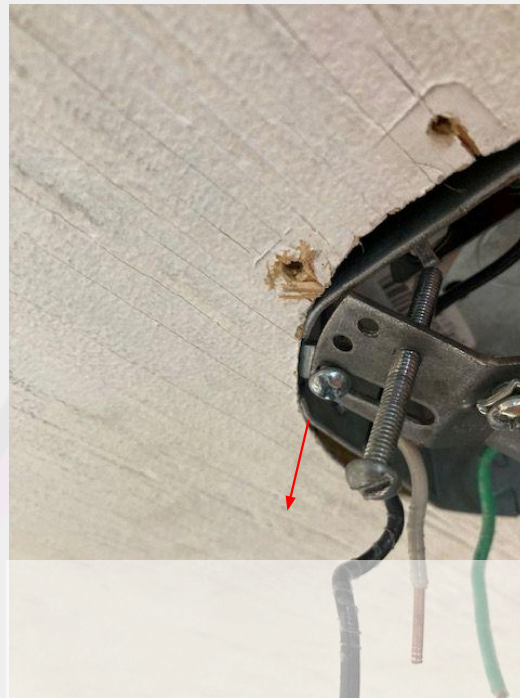
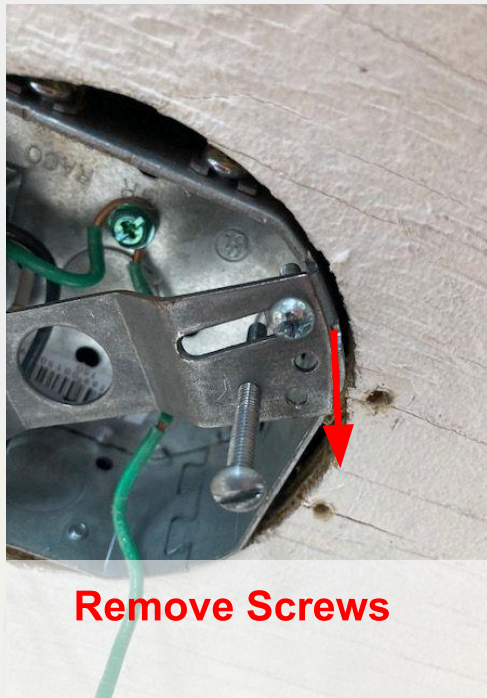
Step 4 - Disconnect all wires

Disconnect the Hot, Neutral, and Ground. Unscrew all wire nuts and pull the cables apart.



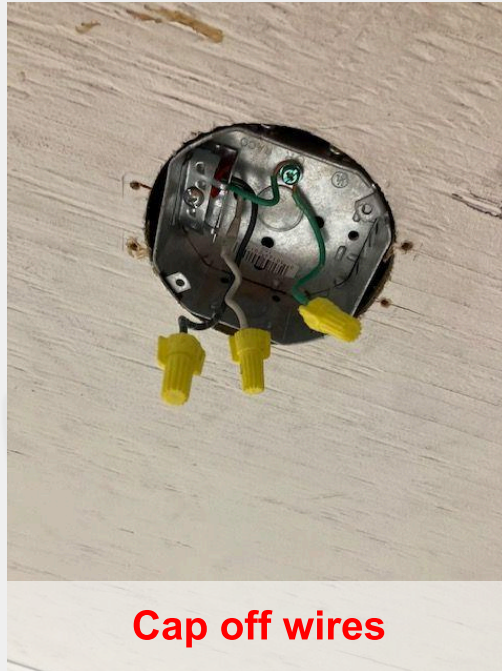
Step 5 - Remove the Mounting Bracket

Remove the mounting bracket from the junction box. Remove the two outer screws securing the bracket to the box and pull the bracket out of the way.



Step 6 Last Touches, Overview

Cap off all wires and remove any last pieces



NOTICE: At no one time should a person be working on a live electrical circuit, make sure to shut down and lock out all incoming sources of power to the circuit. It is recommended to have a qualified electrician complete electrical work. Working with electrical work can have serious consequences such as fires, deafness, blindness, severe burns, and even death. Proceed with extreme caution.