

How-To: Electrical Construction

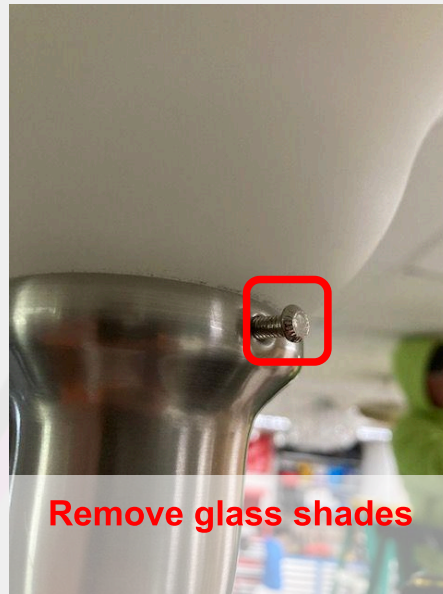
Removing a Chandelier

By: EVG Electric

NOTICE: At no one time should a person be working on a live electrical circuit, make sure to shut down and lock out all incoming sources of power to the circuit. It is recommended to have a qualified electrician complete electrical work. Working with electrical work can have serious consequences such as fires, deafness, blindness, severe burns, and even death. Proceed with extreme caution.

Step 1 - Part Removal

Remove all breakable items from the hanging luminaire. This includes but is not limited to light bulbs, glass shades, decorative items, ropes & cables.



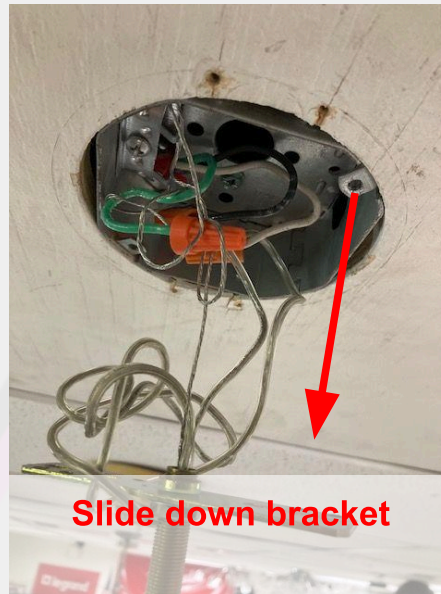
Step 2 - Cover Plate Removal

Remove the locknut at the bottom of the cover plate. This will allow for the cover plate to slide down and allow for access to the J-box.



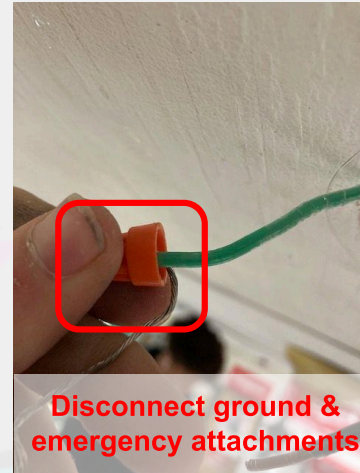
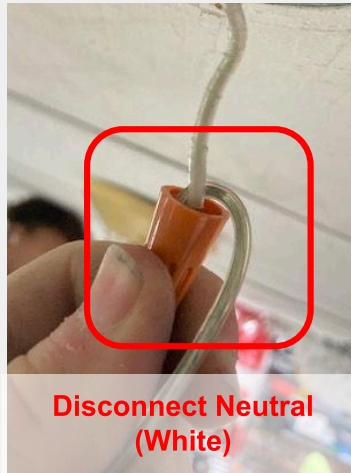
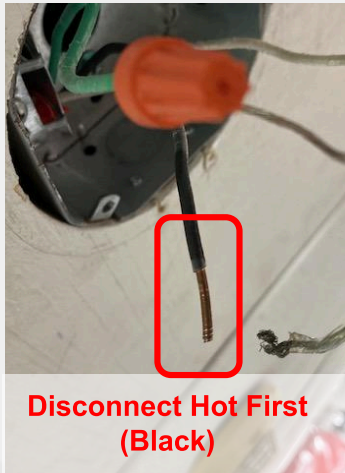
Step 3 - Bracket Removal

Remove the bracket from the J-Box. This can be done by unscrewing the two 8/32 screws on the **edge** of the bracket.



Step 4 - Wire Disconnection

Detach all wires within the fixture, this includes but is not limited to the Hot, Neutral, Ground.



Step 5 - Last Touches, Overview

Close up the main junction box and cap off all wires.



NOTICE: At no one time should a person be working on a live electrical circuit, make sure to shut down and lock out all incoming sources of power to the circuit. It is recommended to have a qualified electrician complete electrical work. Working with electrical work can have serious consequences such as fires, deafness, blindness, severe burns, and even death. Proceed with extreme caution.