

How-To: Electrical Construction

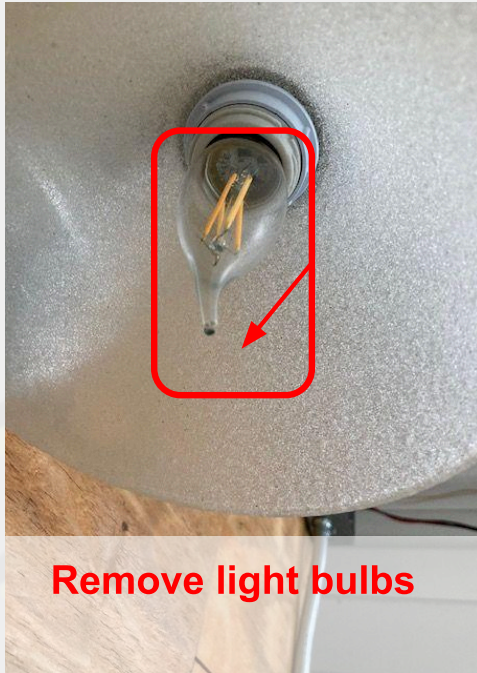
# Removing a Wall Luminaire

By: EVG Electric

**NOTICE:** At no one time should a person be working on a live electrical circuit, make sure to shut down and lock out all incoming sources of power to the circuit. It is recommended to have a qualified electrician complete electrical work. Working with electrical work can have serious consequences such as fires, deafness, blindness, severe burns, and even death. Proceed with extreme caution.

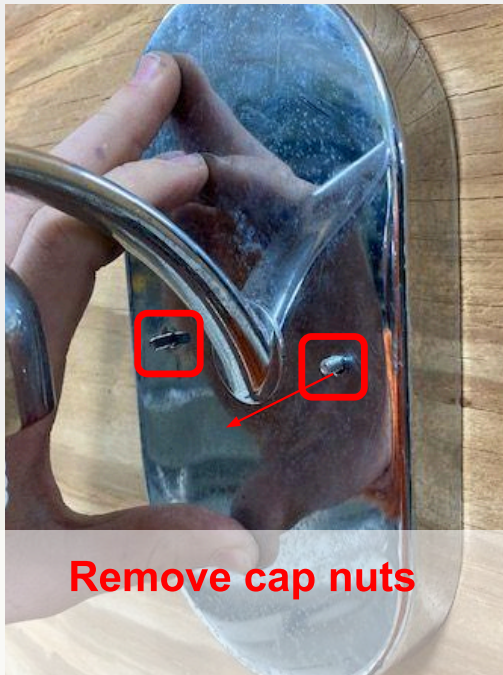
## Step 1 - Preparation

To start removing the wall fixture you must first remove all breakable parts. Remove any light bulbs, decorative items, glass shades, etc. This includes but is not limited to glass decor, wires, ropes, shades, etc.



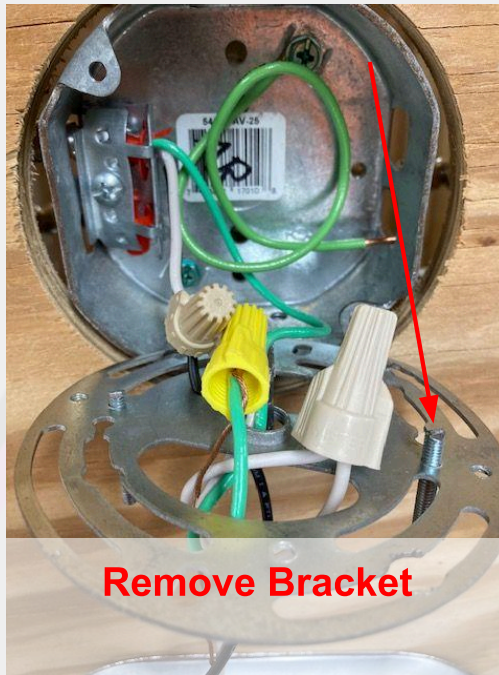
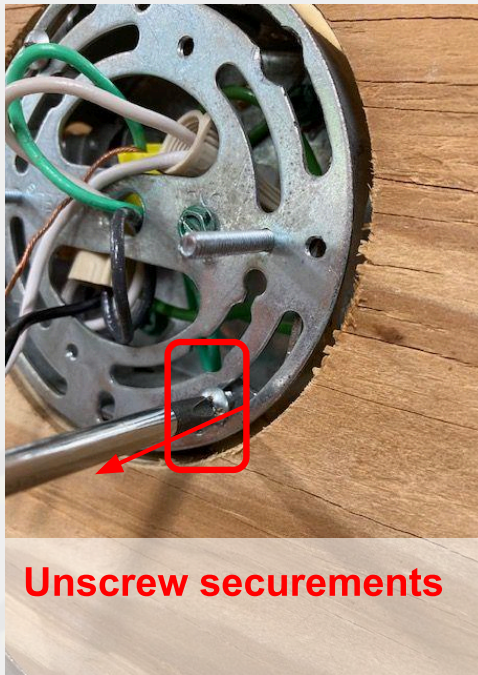
## Step 2 - Cover plate removal

Remove any cap nuts mounted on the front of the cover plate. Then pull/slide the cover plate out of the way to reveal the junction box



## Step 3 - Bracket removal

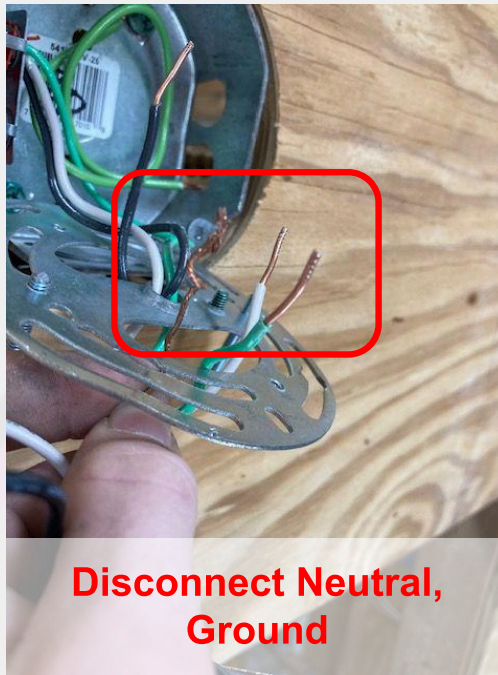
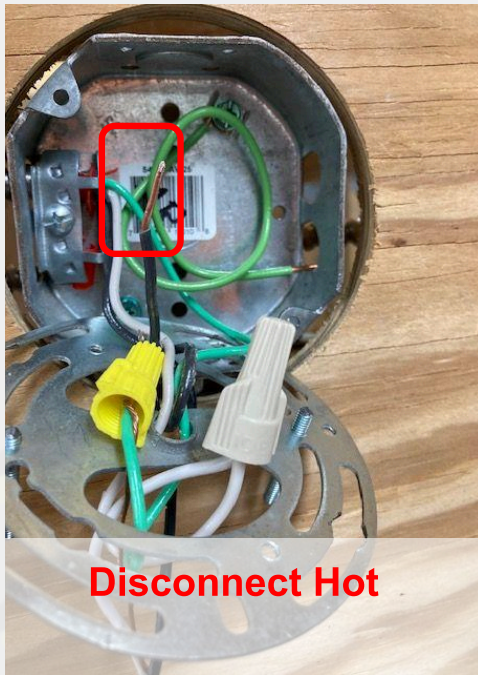
Unscrew any screws/bolts securing the lighting bracket to the junction box. Depending on the type of screws you may be able to just loosen them.





## Step 4 - Wire Disconnection

Disconnect all wires, this includes but is not limited to the Hot (Black), Neutral (White), and the Ground (Green/Bare). Untwist all wire nuts.



## Step 5 - Last touches, Overview

Cap off all other wires, remove any last pieces



**NOTICE:** At no one time should a person be working on a live electrical circuit, make sure to shut down and lock out all incoming sources of power to the circuit. It is recommended to have a qualified electrician complete electrical work. Working with electrical work can have serious consequences such as fires, deafness, blindness, severe burns, and even death. Proceed with extreme caution.